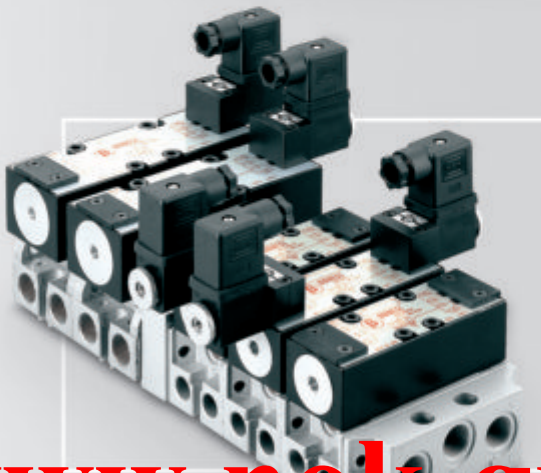
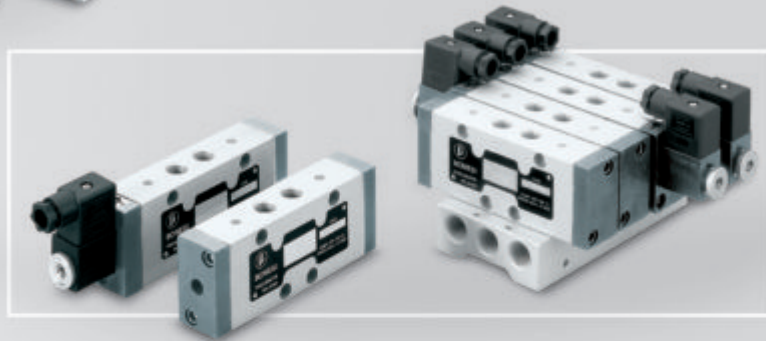
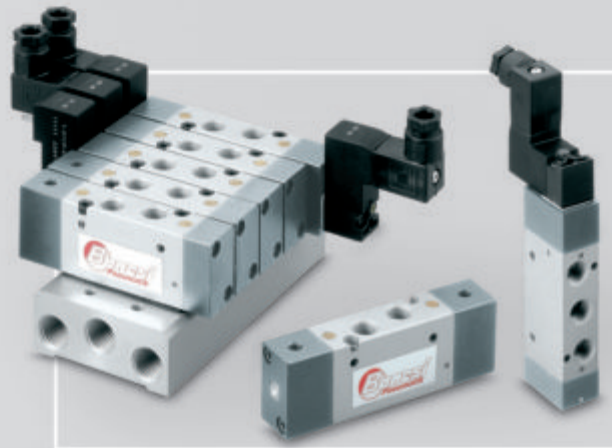




DISTRIBUTORI PNEUMATICI PNEUMATIC VALVES



GRUPPO ALFAMATIC

www.nok-group.cn



**DISTRIBUTORI PNEUMATICI
PNEUMATIC VALVES**



Bonesi
Pneumatik

Da oltre 40 anni Bonesi Pneumatik opera nel settore della componentistica pneumatica; questa sua lunga esperienza è la migliore garanzia per una produzione di distributori automatici di elevata qualità, in grado di soddisfare le più ampie esigenze dell'automazione pneumatica.

Bonesi Pneumatik has been working in the field of pneumatic components for more than 40 years. This long experience is the best warranty for the production of high quality automatic valves, that can meet the different requirements of pneumatic automation.

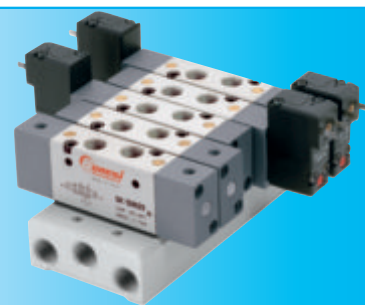
**I DISTRIBUTORI PNEUMATICI SONO PRODOTTI IN:
PNEUMATIC VALVES ARE MANUFACTURED IN:**

6 Famiglie
Families

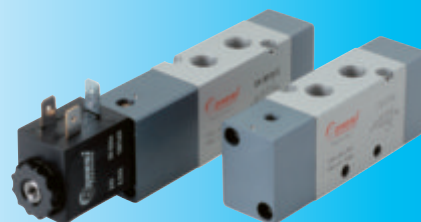
6 Grandezze standard
Standard sizes

16 Versioni
Versions

**LA MINIATURA
MINIATURE**



**LA COMPATTA
COMPACT**



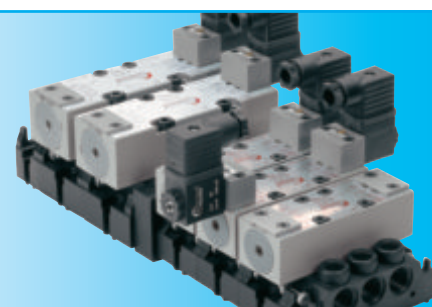
**LE GRANDI PORTATE
E IL VUOTO
HIGH FLOW RATE
AND VACUUM**



**LA STANDARD
STANDARD**



**LA NORMATIVA
ISO STANDARD**



**LE COMPLEMENTARI
ACCESSORIES**



**ELETTROPILOTI
SOLENOID OPERATORS**



**TEMPORIZZATORE
TIMER**



**ANTIRIPETITORE A
COMANDO BIMANUALE
TWO HAND CONTROL
ANTIREPEATER**

昆山恩欧凯自动化设备有限公司

LE TAGLIE SIZES	LE PORTATE FLOW RATES nl/min. a 6 bar	LE FUNZIONI FUNCTIONS	LE VIE WAYS	LA SERIE SERIES	PAG. N° PAGE NO.
--------------------	---	--------------------------	----------------	--------------------	---------------------


1/8"	500	Elettrica Solenoid 2,5 W Pneumatica Pneumatic	5/2	K	4÷7
------	-----	---	-----	---	-----

1/8"	550	Elettrica Solenoid 3 W Pneumatica Pneumatic	5/2 NC	K83	8÷11
1/4"	1100		5/3 CC 5/3 CA 2x(3/2)		

1/8"	1200	Elettrica Solenoid 2,5 W 5 W 8 W Pneumatica Pneumatic	2/2 NC	USA	12÷23
1/4"	2700		3/2 NA		
1/2"	4900		3/2 NC		
3/4"	17000		3/2 NA		
1"	18500		5/2		

1/8"	840	Elettrica Solenoid 5 W Pneumatica Pneumatic	5/2	CETOP	24÷31
1/4"	840		5/3 CC		
1/4"	1700		5/3 CA		
3/4"	1700				
1/2"	4000				

ISO 1	820	Elettrica Solenoid 5 W Pneumatica Pneumatic	5/2	ISO 5599/1	32÷39
ISO 2	1700		5/3 CC 5/3 CA		




NEBULIZZATORE
NEBULIZER



SELETTORE DI CIRCUITO
CIRCUIT SWITCH



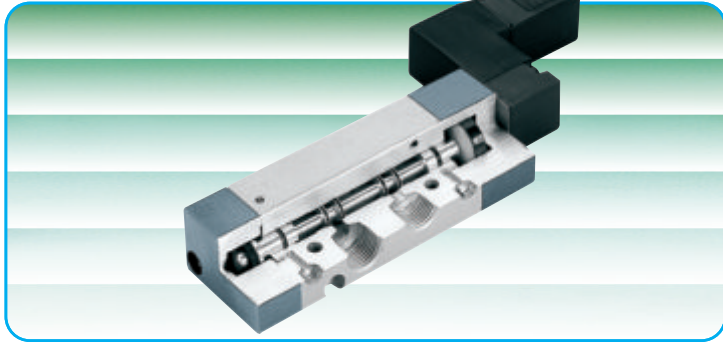
UNIDIREZIONALI
ONE WAY VALVE



SCARICO RAPIDO
QUICK EXHAUST

40÷47

www.nok-group.cn



DATI TECNICI
TECHNICAL DATA

Fluido Fluid	Aria filtrata Filtered air
Lubrificazione Lubrication	Con o senza lubrificazione (in aria umida) With or without lubrication (moist air)
Lubrificante Lubricant	Compatibile con NBR (3°+10° E) classe H Compatible with NBR (3°+10° E) class H

CARATTERISTICHE ELETTRICHE
ELECTRICAL FEATURES

Potenza assorbita Power consumption	MODELLO F	MODELLO ES
	DC 2,5 W AC 5 W	DC 2,5 W AC 5 W
Tensioni DC Voltage DC	12-24 V	
Tensioni AC Voltage AC	24-48-110-220 V - 50÷60 Hz	
Durata inserimento Duty cycle	100%	
Tolleranza tensione Permissible voltage fluctuation	-10%; +15%	
Tipo di protezione Protection	IP-65	
Connettore Connector	2 posizioni a 180° 2 positions 180°	

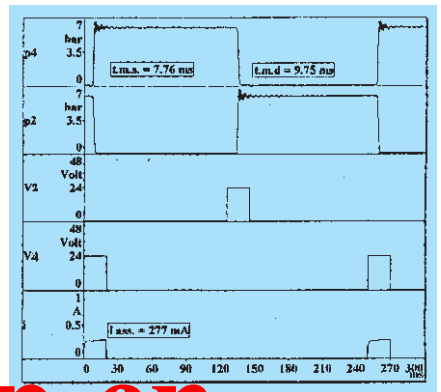
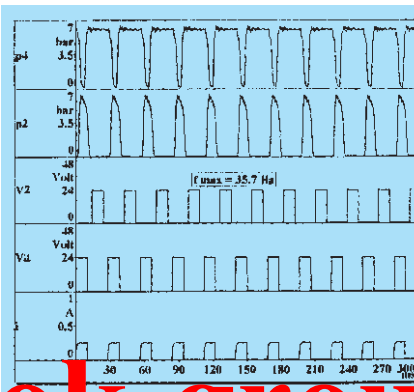
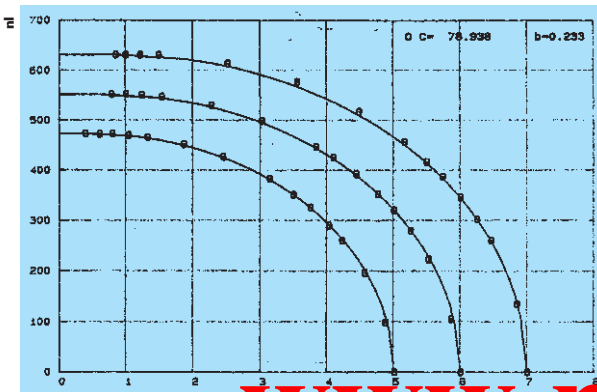
CARATTERISTICHE COSTRUTTIVE
CONSTRUCTIVE FEATURES

Connessione Connection	1/8" Gas
Vie Ways	5/2
Funzioni Functions	Pneumatica - Elettrica Pneumatic - Solenoid
Corpo Body	Al trafilato anodizzato Anodized drawn Al
Spola Spool	Al rettificato rullato Rolled ground Al
Guarnizioni Seals	Gomma nitrilica NBR Nitrilic rubber NBR
Fissaggio Mounting	Fori corpo valvola su basi multiple Holes in valve body on manifolds

PORTATE
FLOW RATES

Portata Flow rate	$\Delta p = 1 \text{ bar}$	NI/min	320	350	400
Pressione Pressure		bar	5	6	7
Diametro nominale Nominal diameter		mm	4		
Pressione di esercizio Operating pressure		bar	min 1,5; max 7		
Pressione pilotaggio min. Min. pilot pressure		bar	1,8		
Temperatura di esercizio Temperature range			-10 °C; + 60 °C		
Installazione Installation			in ogni posizione in any position		

Cert n. 5/94



AD AZIONAMENTO PNEUMATICO
PNEUMATICALLY ACTUATED
 Ritorno molla pneumatica
 Pneumatic spring return



Simbolo Symbol	Funzioni Functions	Peso g Weight g	Codice Code
	5/2 monostabile 5/2 pilot-spring	98	DK 138010
	5/2 bistabile 5/2 double-pilot	110	DK 138020

AD AZIONAMENTO ELETTRICO versione F
SOLENOID ACTUATED
 Ritorno molla pneumatica
 Pneumatic spring return



Sono forniti completi di bobine
 Supplied complete with coils

Simbolo Symbol	Funzioni Functions	Peso g Weight g	Codice Code
	5/2 monostabile 5/2 pilot-spring	145	EK 138010/F..*
	5/2 bistabile 5/2 double-pilot	185	EK 138020/F..*

* indicare la tensione
 * quote voltage

AD AZIONAMENTO ELETTRICO versione ES
SOLENOID ACTUATED
 Ritorno molla pneumatica
 Pneumatic spring return



Simbolo Symbol	Funzioni Functions	Peso g Weight g	Codice Code
	5/2 monostabile 5/2 pilot-spring	145	EK 138010/ES..*
	5/2 bistabile 5/2 double-pilot	185	EK 138020/ES..*

* indicare la tensione
 * quote voltage

PER VERSIONE F
FOR VERSION F

ELETTROPILOTI
SOLENOID OPERATORS
 Con comando manuale
 a posizioni stabili
 Manually operated
 double-pilot



Codice
 Code BOB F...*

* indicare la tensione
 * quote voltage

CONNETTORE
CONNECTOR



Codice
 Code CNN 3

PER VERSIONE ES
FOR VERSION ES

BOBINA
COIL



Codice
 Code BOB ES...*

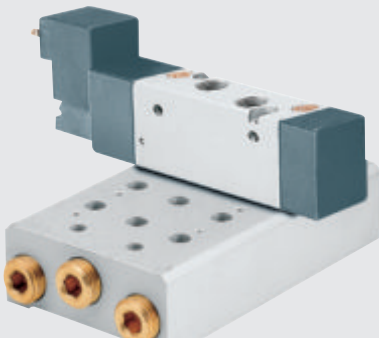
* indicare la tensione
 * quote voltage

CONNETTORE
CONNECTOR



Codice
 Code CNN 1

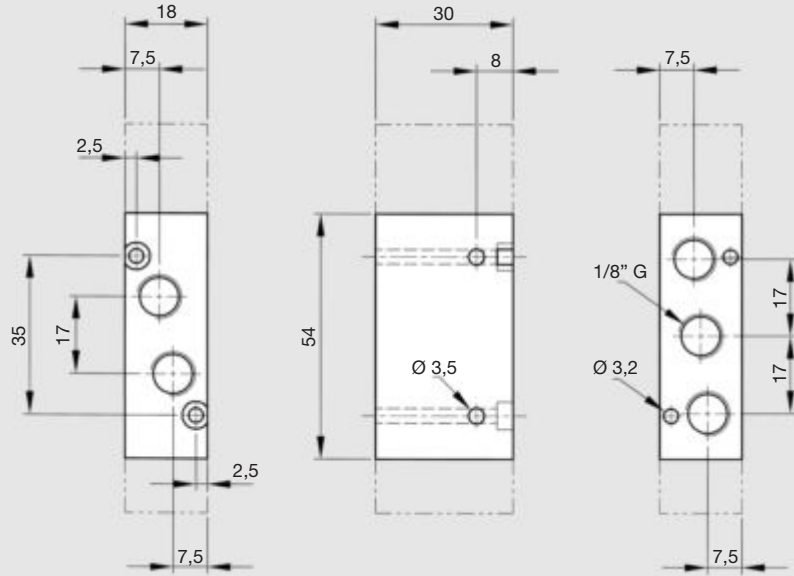
BASI PER MONTAGGIO IN BATTERIA
SUB-BASES FOR MANIFOLD MOUNTINGS



Base	Base	Codice Code
2 posti	2 stations	BCK-82
3 posti	3 stations	BCK-83
4 posti	4 stations	BCK-84
5 posti	5 stations	BCK-85
6 posti	6 stations	BCK-86
Guarnizione	Seal	KGK-8
Piastra di chiusura	End plate	KPK-8

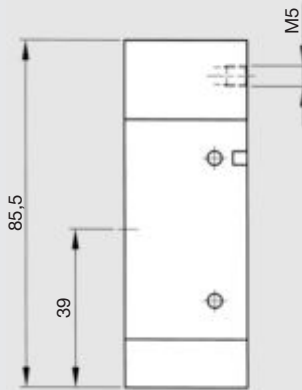
MICROVALVOLE serie K LE DIMENSIONI

DIMENSIONI COMUNI COMMON DIMENSIONS mm



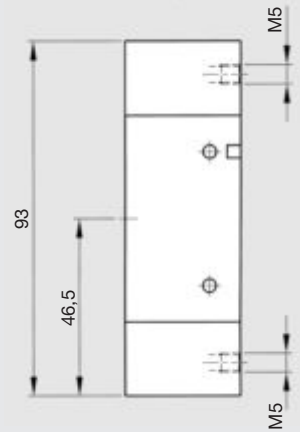
MONOSTABILE PNEUMATICA PNEUMATIC - PILOT-SPRING 5/2

Cod. **DK 138010**
Code



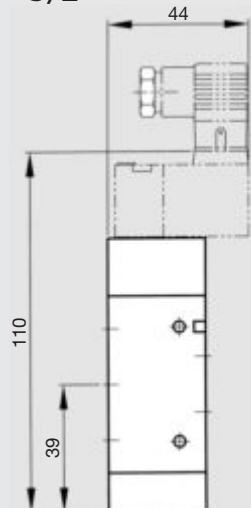
BISTABILE PNEUMATICA PNEUMATIC - DOUBLE-PILOT 5/2

Cod. **DK 138020**
Code



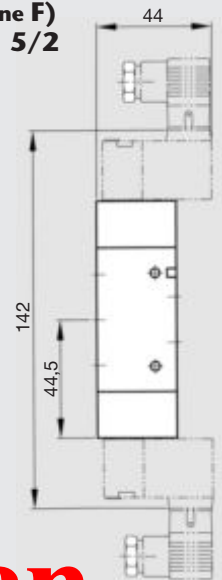
MONOSTABILE ELETTRICA (versione F) SOLENOID - PILOT-SPRING 5/2

Cod. **EK 138010/F**
Code



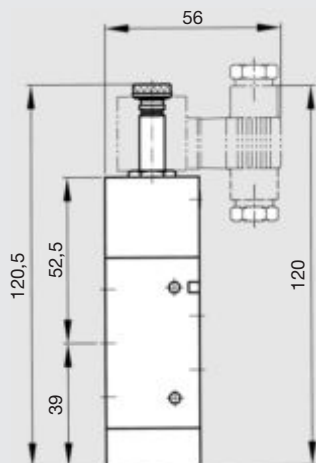
BISTABILE ELETTRICA (versione F) SOLENOID - DOUBLE-PILOT 5/2

Cod. **EK 138020/F**
Code



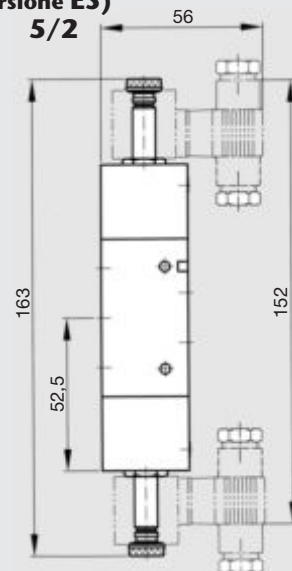
MONOSTABILE ELETTRICA (versione ES) SOLENOID - PILOT-SPRING 5/2

Cod. **EK 138010/ES**
Code

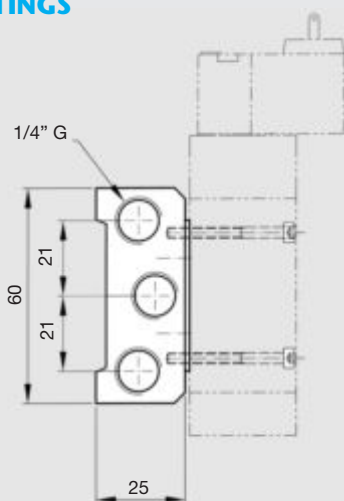
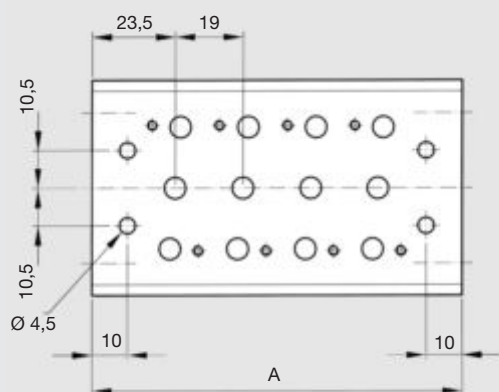


BISTABILE ELETTRICA (versione ES) SOLENOID - DOUBLE-PILOT 5/2

Cod. **DK 138020/ES**
Code



BASI PER MONTAGGIO IN BATTERIA SUB-BASES FOR MANIFOLD MOUNTINGS



PIASTRA DI ESCLUSIONE BLANKING PLATE

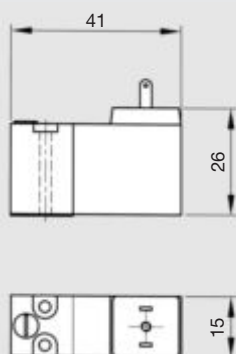


Codice Code	A
BCK 82	66
BCK 83	85
BCK 84	104
BCK 85	123
BCK 86	142

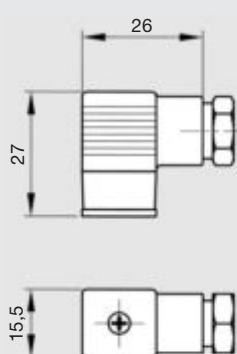
Le basi sono fornite complete di guarnizioni e viti di fissaggio.
Sub-bases are supplied complete with seals and fixing screws.

PER VERSIONE F FOR VERSION F

ELETTROPILOTA
completo di bobina
SOLENOID OPERATOR
complete with coil

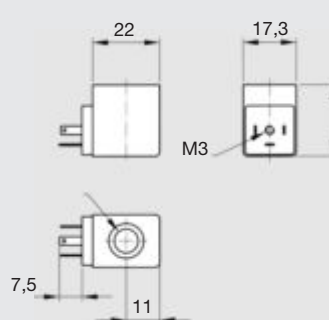


CONNETTORE
CONNECTOR

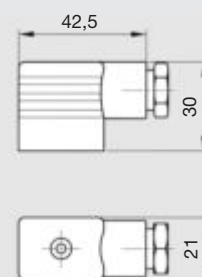


PER VERSIONE ES FOR VERSION ES

BOBINA
COIL



CONNETTORE
CONNECTOR

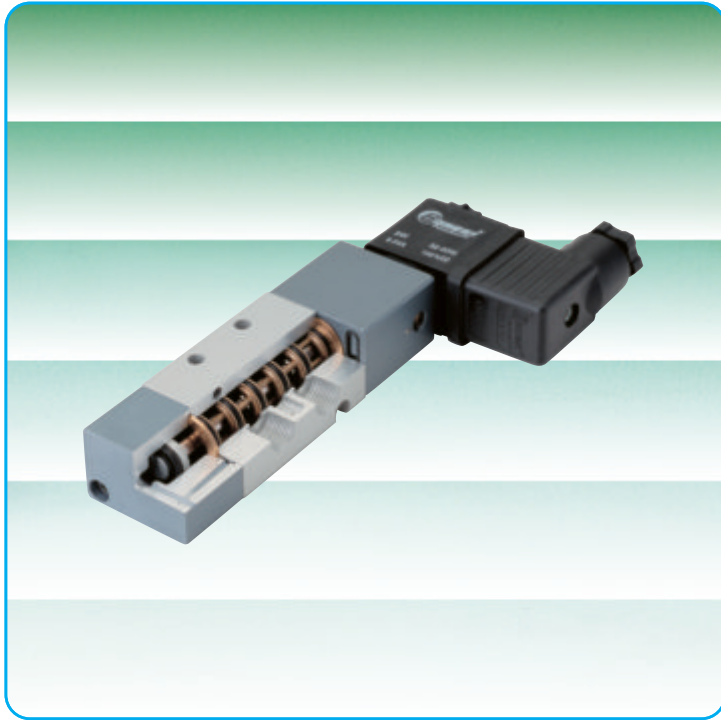


MICROVALVOLE serie K 83

A SPOLA BILANCIATA

MICRO VALVES series K 83

BALANCED SPOOL



CARATTERISTICHE COSTRUTTIVE

CONSTRUCTIVE FEATURES

Taglie Sizes	1/8" - 1/4"
Vie Ways	5/2 - 5/3 - 2x3/2
Funzioni Functions	Pneumatica - Elettrica Pneumatic - Solenoid
Corpo Body	Alluminio anodizzato Anodized aluminium
Spola Spool	Lega alluminio nichelato Nickel plated aluminium
Guarnizioni Seals	Gomma nitrilica NBR Nitrilic rubber NBR
Parti interne Internal parts	Ottone Brass
Fissaggio Mounting	con fori nel corpo o su base manifold through body holes or with manifold bases

DATI TECNICI

TECHNICAL DATA

Fluido Fluid	Aria filtrata 50µ 50µ Filtered air
Lubrificazione Lubrication	Con o senza lubrificazione (in aria umida) With or without lubrication (moist air)
Lubrificante Lubricant	Compatibile con NBR (3°±10° E) classe H Compatible with NBR (3°±10° E) class H

CARATTERISTICHE TECNICHE

TECHNICAL FEATURES

Denominazione Denomination	Connessione 1/8"	Connection 1/4"	
		mm	mm
Diametro nominale Nominal diameter	5	7,5	
Pressione di esercizio Operating pressure	max. 10 bar - max. 1 MPa		
Pressione min. di pilotaggio Min. pilot pressure	1÷2,5 bar - 0,1÷0,25 MPa		
Temperatura di esercizio Temperature range	-10°C + 60°C		

LE PORTATE

FLOW RATES

Taglia Size	Portata Flow rate NI/min				
Pressione Pressure (Δp = 1 bar)	3	4	5	6	7
	1/8"	400	450	500	550
1/4"	800	900	1000	1100	1200

CARATTERISTICHE ELETTRICHE

ELECTRICAL FEATURES

Potenza assorbita Power consumption	DC=3W AC=5VA
Tensioni DC Voltage DC	12-24V
Tensioni AC Voltage AC	24-110-230 V 50±60 Hz
Durata inserimento Duty cycle	100%
Tolleranza tensione Permissible voltage fluctuation	±10%
Tipo di protezione Protection	IP-65
Connettore Connector	2 posizioni a 180° 2 positions 180°

**AD AZIONAMENTO PNEUMATICO
PNEUMATICALLY ACTUATED**



Simbolo Symbol	Funzioni Functions	Ritorno Return	Taglia Size	Peso g Weight g	Codice Code
	5/2 monostabile 5/2 pilot spring	molla meccanica mechanical spring	1/8" 1/4"		DK 8517 DK 4517
	5/2 monostabile 5/2 pilot spring	molla pneumatica pneumatic spring	1/8" 1/4"		DK 8516 DK 4516
	5/2 bistabile 5/2 double-pilot		1/8" 1/4"		DK 8526 DK 4526
	5/2 bistabile differenziale 5/2 double-pilot with differential		1/8" 1/4"		DK 8527 DK 4527
	2x3/2 bistabile 2x3/2 double-pilot		1/8" 1/4"		DK 8126 DK 4126

**AD AZIONAMENTO PNEUMATICO
PNEUMATICALLY ACTUATED**



Simbolo Symbol	Funzioni Functions	Ritorno Return	Taglia Size	Peso g Weight g	Codice Code
	5/2 monostabile 5/2 pilot spring	molla meccanica mechanical spring	1/8" 1/4"		EK 8512/C EK 4512/C
	5/2 monostabile 5/2 pilot spring	molla pneumatica pneumatic spring	1/8" 1/4"		EK 8511/C EK 4511/C
	5/2 bistabile 5/2 double-pilot		1/8" 1/4"		EK 8521/C EK 4521/C
	5/2 bistabile differenziale 5/2 double-pilot with differential		1/8" 1/4"		EK 8522/C EK 4522/C
	5/3 bistabile centri chiusi 5/3 double pilot closed centres		1/8" 1/4"		EK 8621/C EK 4621/C
	5/3 bistabile centri aperti 5/3 double pilot opened centres		1/8" 1/4"		EK 8721/C EK 4721/C
	2x3/2 monostabile N.O.-N.C. 2x3/2 double-pilot		1/8" 1/4"		EK 8121/C EK 4121/C

**SOTTOBASI
MANIFOLDS**



Nr.Posti Nr. position	Codice Code	
	1/8"	1/4"
2	BCK5-82	BCK5-42
3	BCK5-83	BCK5-43
4	BCK5-84	BCK5-44
5	BCK5-85	BCK5-45
6	BCK5-86	BCK5-46
7	BCK5-87	BCK5-47
8	BCK5-88	BCK5-48

**BOBINA 3W
COIL**
Cod. BOB C
Code

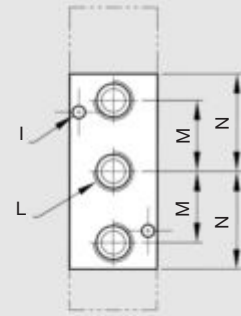
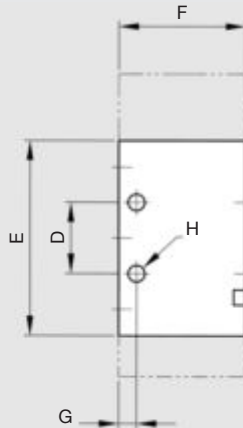
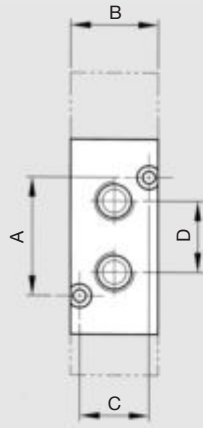


**CONNETTORE
CONNECTOR**
Cod. CNN-1
Code



* indicare la tensione
* quote voltage

DIMENSIONI COMUNI
COMMON DIMENSIONS

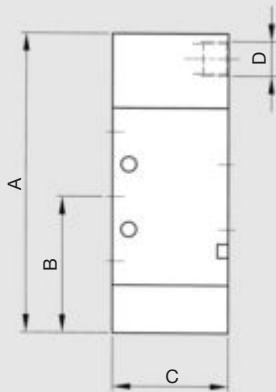


Connessione Connection	A	B	C	D	E	F	G	H	I	L	M	N
1/8"	30	22	17,4	18	49,5	32	4,5	Ø4,2	Ø3,2	R5	18	24,75
1/4"	38	25	19,6	22	62	40	6	Ø4,2	Ø3,2	1/4"G	22	31

MONOSTABILE PNEUMATICA
molla meccanica
PNEUMATIC SINGLE PILOT
mechanical spring



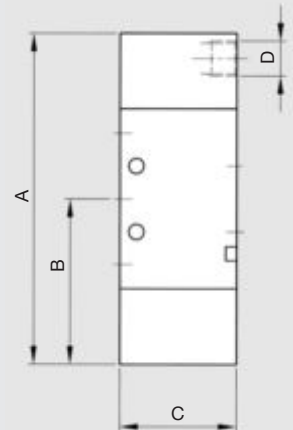
Codice Code	
DK 8517	DK 4517
Connessione Connection	
1/8"	1/4"
A	A
84	99
B	B
38	46
C	C
32	40
D	D
M5	1/8"G



MONOSTABILE PNEUMATICA
molla pneumatica
PNEUMATIC SINGLE PILOT
pneumatic spring



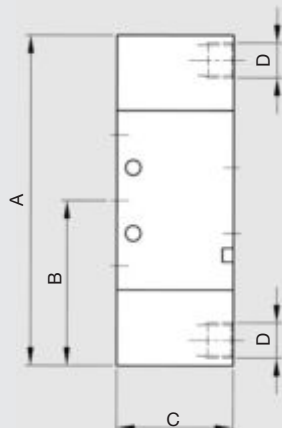
Codice Code	
DK 8516	DK 4516
Connessione Connection	
1/8"	1/4"
A	A
91,5	106
B	B
45,75	53
C	C
32	40
D	D
M5	1/8"G



BISTABILE PNEUMATICA
PNEUMATIC DOUBLE-PILOT



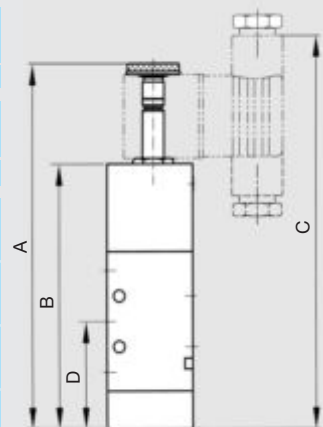
Codice Code	
DK 8526	DK 4526
DK 8527	DK 4527
DK 8126	DK 4126
Connessione Connection	
1/8"	1/4"
A	A
91,5	106
B	B
45,75	53
C	C
32	40
D	D
115	118
	1/8"G



MONOSTABILE ELETTRICA
molla meccanica
SOLENOID OPERATED SINGLE PILOT
mechanical spring



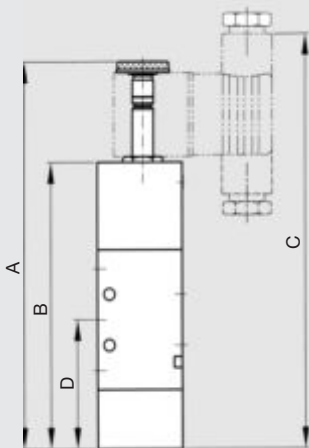
Codice Code	
EK 8511/C	EK 4511/C
Connessione Connection	
1/8"	1/4"
A	A
129,5	144,5
B	B
94	109
C	C
139	154
D	D
28	16



MONOSTABILE ELETTRICA
molla pneumatica
SOLENOID OPERATED SINGLE PILOT
pneumatica spring



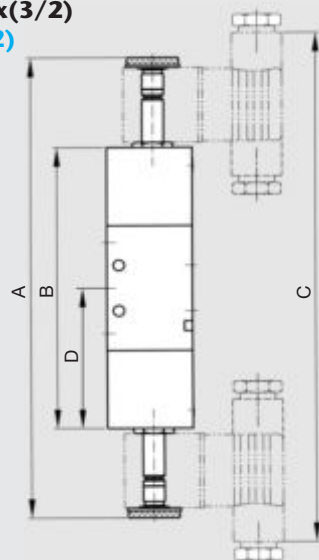
Codice Code	
EK 8512/C	EK 4512/C
Connessione Connection	
1/8"	1/4"
A	A
137	151,5
B	B
101,5	116
C	C
146,5	161
D	D
45,75	53



BISTABILE ELETTRICA e 2x(3/2)
DOUBLE PILOT and 2x(3/2)



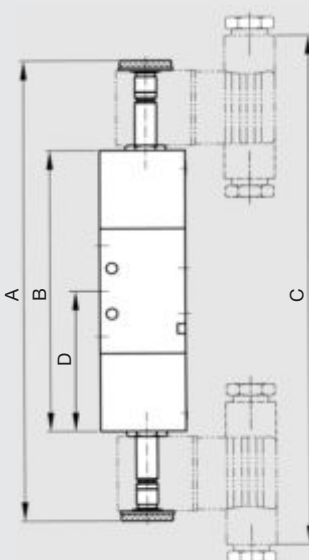
Codice Code	
EK 8521/C	EK 4521/C
EK 8522/C	EK 4522/C
EK 8121/C	EK 4121/C
Connessione Connection	
1/8"	1/4"
A	A
182,5	197
B	B
111,5	126
C	C
201,5	216
D	D
55,75	63



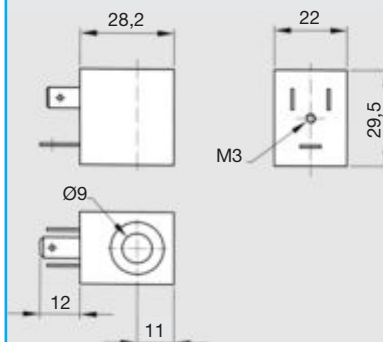
BISTABILE ELETTRICA 5/3
SOLENOID OPERATED
DOUBLE PILOT 5/3



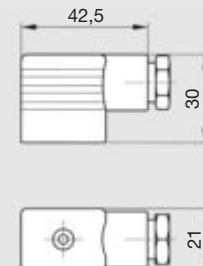
Codice Code	
EK 8511/C	EK 4621/C
EK 8511/C	EK 4721/C
Connessione Connection	
1/8"	1/4"
A	A
182,5	217
B	B
111,5	146
C	C
201,5	236
D	D
55,75	73



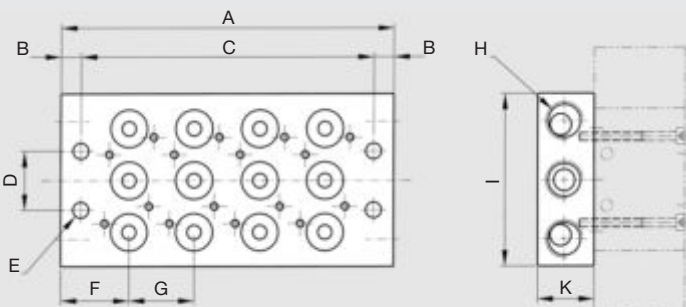
BOBINA (BOB C)
COIL (BOB C)



CONNETTORE (CNN 1)
CONNECTOR (CNN 1)



BASI PER MONTAGGIO IN BATTERIA
SUB-BASES FOR MANIFOLD MOUNTINGS



PIASTRA DI ESCLUSIONE
END PLATE

PIASTRA PER ALIMENTAZIONE SEPARATA
END PALTE FOR INDEPENDENT AIR SUPPLY

DIMENSIONI BASE A 2 POSTI (MAX 10 POSTI)

	1/8"	1/4"		1/8"	1/4"
A	71 ⁽¹⁾	78 ⁽²⁾	I	60	70
B		7	K	20	25
C	57 ⁽¹⁾	64 ⁽²⁾	L	10	15
D	20,5	24	M	60	70
E		Ø5,5	N	22	25
F	24	26	O	22,5	25
G	23	26	P	15	20
H	1/4G	3/8G	Q	61	70

⁽¹⁾ Aggiungere mm 23 per ogni ulteriore posto
⁽²⁾ Aggiungere mm 26 per ogni ulteriore posto